

Typical configurations are shown in bold, or select options

1 Oval Profile:

<p>Vertical</p> <p>Only in Stainless Brushed (#4)</p>	<p>1.9" x 1.0" (48.26 x 25.4mm)</p> <p>AHO190VS</p>		<p>Oval Profile:</p> <p>Horizontal</p> <p>Only in Stainless Brushed (#4)</p>	<p>1.9" x 1.0" (48.26 x 25.4mm)</p> <p>AHO190VS</p>	
--	--	---	--	---	---

2 Vertical Profile Spacer:

<p>Barrel 1.25" (31.75mm) Dia.</p> <p>BL-O</p>	<p>Soft Square 1.25" (31.75mm)</p> <p>SQ-O</p>
---	---

Horizontal Profile Spacer:


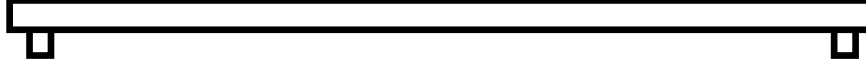
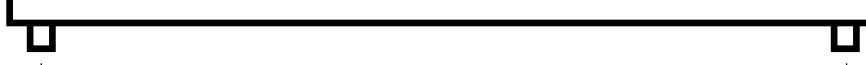

Supplied only with:

Saddle Mount 1.25" (31.75mm) SM-O

3 Spacer Installation:

<p>In-Cab (removable) IR</p> <p>Exterior Mounting IX</p> <p><small>Note: Not all options may be available; please check our website or call for details</small></p>	<p>Optional CerinoX Coating:</p> <p><small>CerinoX is a ceramic coating over Stainless brushed.</small></p> <table border="0"> <tr> <td>Onyx Black (gloss)</td> <td>CX1</td> </tr> <tr> <td>StormTrooper White (gloss)</td> <td>CX2</td> </tr> <tr> <td>Burnt Bronze (matte)</td> <td>CX3</td> </tr> <tr> <td>Charcoal Bronze (matte)</td> <td>CX4</td> </tr> <tr> <td>Bondi Golden (matte)</td> <td>CX5</td> </tr> </table>	Onyx Black (gloss)	CX1	StormTrooper White (gloss)	CX2	Burnt Bronze (matte)	CX3	Charcoal Bronze (matte)	CX4	Bondi Golden (matte)	CX5
Onyx Black (gloss)	CX1										
StormTrooper White (gloss)	CX2										
Burnt Bronze (matte)	CX3										
Charcoal Bronze (matte)	CX4										
Bondi Golden (matte)	CX5										

4 Select Rail Ends and Specify Measurements:

		Imperial		Metric
Qty:				
ST Straight	<div style="display: flex; align-items: center;"> <div style="margin-right: 10px;">← 6" Std →</div> <div style="flex-grow: 1; border-bottom: 1px dashed black; position: relative;"> Indicate additional spacers with an "X". Fill in measurements between each spacer. </div> </div>			Straight ST
BR Bent		Bent BR		
	Overall Length: _____			
Qty:				
ST Straight	<div style="display: flex; align-items: center;"> <div style="margin-right: 10px;">← 6" Std →</div> <div style="flex-grow: 1; border-bottom: 1px dashed black; position: relative;"> Indicate additional spacers with an "X". Fill in measurements between each spacer. </div> </div>			Straight ST
BR Bent		Bent BR		
	Overall Length: _____			
Qty:				
ST Straight	<div style="display: flex; align-items: center;"> <div style="margin-right: 10px;">← 6" Std →</div> <div style="flex-grow: 1; border-bottom: 1px dashed black; position: relative;"> Indicate additional spacers with an "X". Fill in measurements between each spacer. </div> </div>			Straight ST
BR Bent		Bent BR		
	Overall Length: _____			
Qty:				
ST Straight	<div style="display: flex; align-items: center;"> <div style="margin-right: 10px;">← 6" Std →</div> <div style="flex-grow: 1; border-bottom: 1px dashed black; position: relative;"> Indicate additional spacers with an "X". Fill in measurements between each spacer. </div> </div>			Straight ST
BR Bent		Bent BR		
	Overall Length: _____			

5 Additional Notes/Details/Specifications:

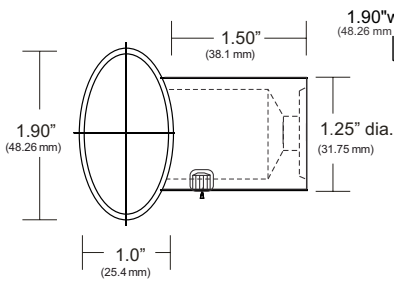
QUOTE FOR:	SHIP TO:	SUBMIT FORM:
-------------------	-----------------	---------------------

Company: _____	Address: _____	
Contact: _____	City: _____	OR
PO #: _____	Country: _____	Zip/Postal Code: _____
Job Name: _____	Tel: _____	Fax: _____
E-Mail: _____	Freight: Add Shipping	On Account # _____

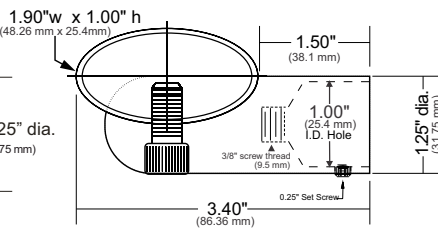
To clear form, go to menu > File > Revert

OVAL HANDRAIL ENGINEERING DATA (AHO190VS-AHO190HS SERIES)

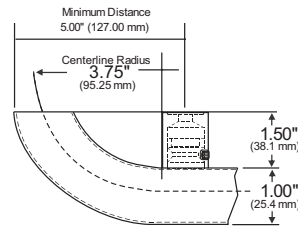
Vertical Profile #AHO190VS



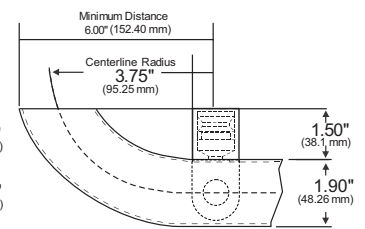
Horizontal Profile #AHO190HS



Vertical Profile Bend #AHOBEV

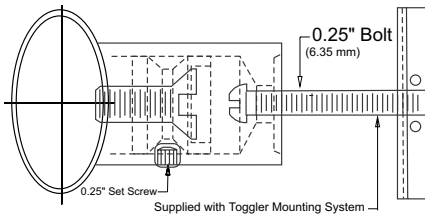


Horizontal Profile Bend #AHOBEH

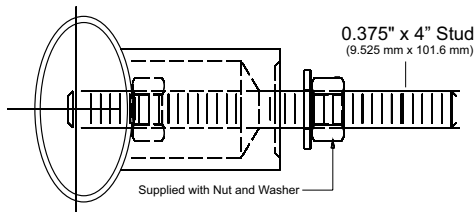


VERTICAL PROFILE INSTALLATION SPACER

In Cab (removable) Mounting Spacer



Exterior Cab Mounting Spacer



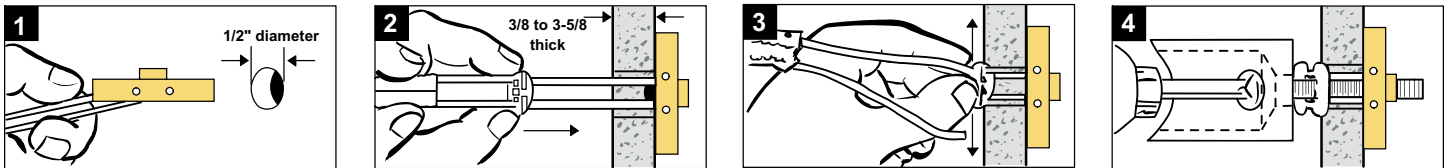
PULL-OUT VALUES for 1/4"- 20 BOLT

265 lbs (120 kg) ultimate tensile load in 1/2" drywall
 306 lbs (162 kg) ultimate tensile load in 5/8" drywall
 925 lbs (420 kg) ultimate tensile load in concrete block
 1,283 lbs (583 kg) ultimate tensile load in steel plate

PULL-OUT VALUES for 3/8" STUD

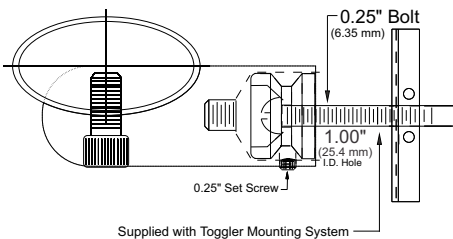
Handrail Thread-lock fastener engineered test data
 Pull-out values for removal of threaded fasteners from Lustre Products' handrails = 1509 lbs
 Tests by independent test laboratory show ultimate load. Industry safety standards recommend 1/4 of the values for actual applications. Age and conditions of substrate will cause load values to vary.

Vertical Profile Mounting Instructions

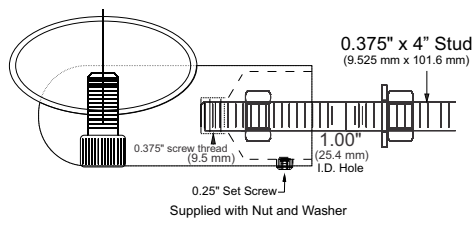


HORIZONTAL PROFILE INSTALLATION SPACER

In Cab (removable) Mounting Spacer



Exterior Cab Mounting Spacer



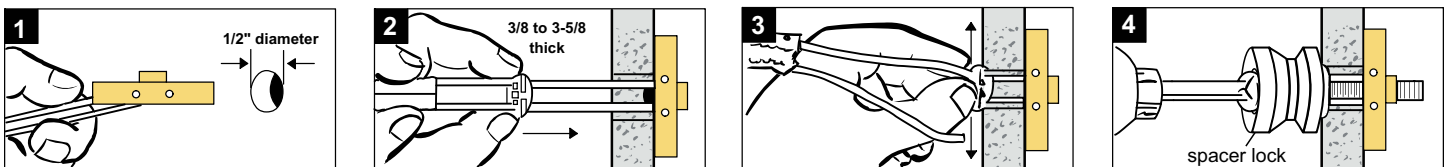
PULL-OUT VALUES for 1/4"- 20 BOLT

265 lbs (120 kg) ultimate tensile load in 1/2" drywall
 306 lbs (162 kg) ultimate tensile load in 5/8" drywall
 925 lbs (420 kg) ultimate tensile load in concrete block
 1,283 lbs (583 kg) ultimate tensile load in steel plate

PULL-OUT VALUES for 3/8" STUD

Handrail Thread-lock fastener engineered test data
 Pull-out values for removal of threaded fasteners from Lustre Products' handrails = 1509 lbs
 Tests by independent test laboratory show ultimate load. Industry safety standards recommend 1/4 of the values for actual applications. Age and conditions of substrate will cause load values to vary.

Horizontal Profile Mounting Instructions



HANDRAIL WEIGHT

ACTUAL WEIGHTS = Handrail physical weight calculations = 1.1 lbs per lineal foot (0.50 kg / 30.48 cm)

Spacer assembly = 0.4 lbs (0.18 kg) per spacer

SHIPPING WEIGHTS = Average assembled & packaged shipping weight = 2.1 lbs per lineal foot of handrail (0.95 kg / 30.48 cm)

CARE & MAINTENANCE

To clean and maintain these handrails: gently clean only with a soft cloth, dampened with non abrasive soap and water. Maintain stainless steel using Scotch-Brite pads, Brasso, Miracle Shine, or other commercial metal polish. Brass and bronze sheet metal finishes have a baked clear coat and are non-refinishable. THE FINISH IS NOT WARRANTIED. It will degrade with normal use and typical wear and tear.