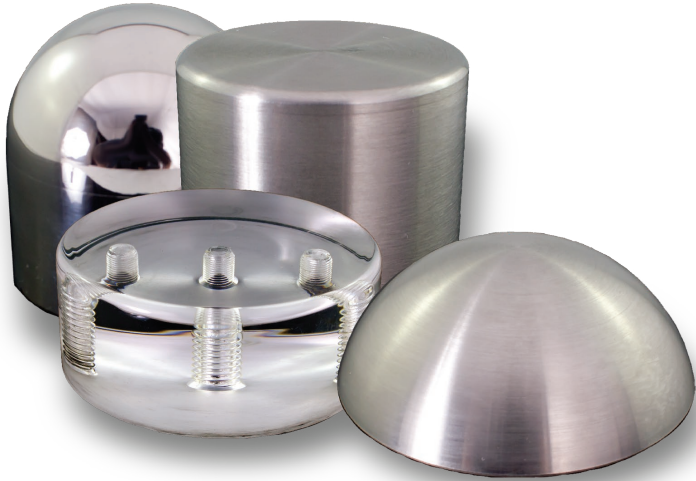




ESCALATOR ANTI-SLIDE KNOBS



THE BEST DEFENSE

Lustre Products escalator anti-slide knobs is the ideal solution to combat risky behavior around any escalator, plus they look great while doing it. They can also be used in other areas, such as to provide an effective method of deterrence against grinding and other skateboard tricks that could damage property or drive away patrons.

MULTIPLE VARIETIES

Lustre Products escalator anti-slide knobs come in a variety of styles to choose from. Whether a sleek mirror polished and clear polished glass look, or satin steel or acrylic finish, you are sure to find the knob to suit your particular environment. Dome style and Puck style knobs, in assorted sizes, offer two easy methods of installation, making it simple for you to add a deterrence to risky behavior around your escalators or other property.

TWO WAYS TO INSTALL, ONE GREAT RESULT

Each knob offers two methods of installation, and includes all necessary mounting hardware for both.

COMBAT RISKY BEHAVIOR AROUND ANY ESCALATOR



Installation method "A" uses a template for bolts to be fastened from beneath surface.



Installation method "B" uses a toggler method for a quicker and easier topside installation.

TO ORDER:

Sales@lustreproducts.com

1.866.823.4160 or 1.604.823.4160



ESCALATOR ANTI-SLIDE KNOBS



PUCK STYLE

Edges are rounded to prevent injury from casual contact



DOMESTYLE

Radiused surface to prevent injury from casual contact



AEK002H
2" d x 2" h



AEK002HP
2" d x 2" h



AEK001H
2" d x 2" h



AEK001HP
2" d x 2" h



AEK002A
2.5" d x 1" h



AEK002AP
2.5" d x 1" h



AEK001A
2.5" d x 1" h



AEK001AP
2.5" d x 1" h



AEK002S
2.5" d x 1" h



AEK002SP
2.5" d x 1" h



AEK001S
2.5" d x 1" h



AEK00SP
2.5" d x 1" h



AEK002T
2.5" d x 2" h



AEK002TP
2.5" d x 2" h



AEK001T
2.5" d x 2" h



AEK001TP
2.5" d x 2" h



AEK002B
2.5" d x 2" h



AEK002BP
2.5" d x 2" h



AEK001B
2.5" d x 2" h



AEK001BP
2.5" d x 2" h

TO ORDER:

Sales@lustreproducts.com

1.866.823.4160 or 1.604.823.4160