

1 Rail Diameter:

1.5" (38.10mm) Diameter AHR1500

2.0" (50.00mm) Diameter AHR2000

Note: Not all options may be available; please check our website or call for details

2 Material/Finish:

Brushed (#4)	Polished (#8)	
S4.....	S8.....	Stainless Steel (304 alloy)
B4.....	B8.....	Bronze (385 alloy)*
Y4.....	Y8.....	Yellow Brass (260 alloy)*
C4.....	C8.....	Copper (t22 alloy)*

*Clear CerinoX is applied on all Bronze, Brass and Copper alloys unless requested otherwise.

Optional CerinoX Coating:

Onyx Black (gloss)	CX1	CerinoX is a ceramic coating over Stainless brushed.
StormTrooper White (gloss)	CX2	
Burnt Bronze (matte)	CX3	
Charcoal Bronze (matte)	CX4	
Bondi Golden (matte)	CX5	

3 Spacer Mount:

Barrel 1.25" (31.75mm) Diameter	BL-R
Barrel 1.5" (38.10mm) Diameter	BX-R
Soft Square 1.25" (31.75mm)	SQ-R
Saddle Mount 1.25" (31.75mm)	SM-R

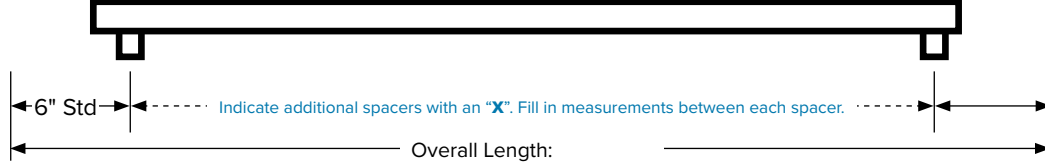
Spacer Installation:

In-Cab (removable)	IR
Exterior Mounting	IX

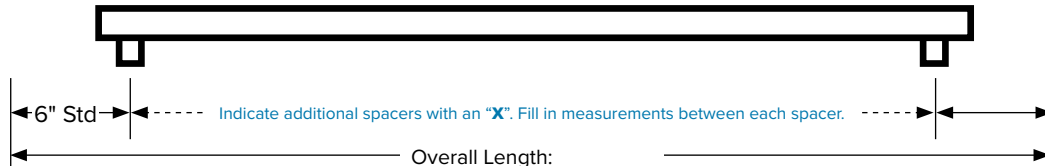
4 Select Rail Ends and Specify Measurements:

Imperial Metric

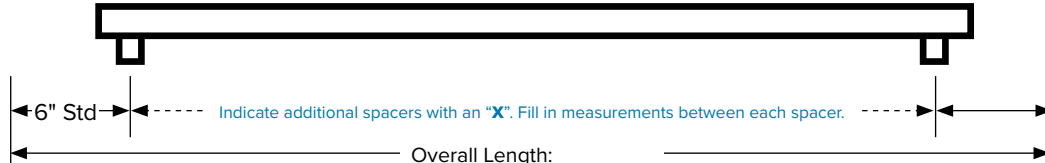
Qty:

ST Straight	 <p>←6" Std→ Indicate additional spacers with an "X". Fill in measurements between each spacer.</p> <p>Overall Length: _____</p>	Straight	ST
BR Bent		Bent	BR
BN Ballnose		Ballnose	BN

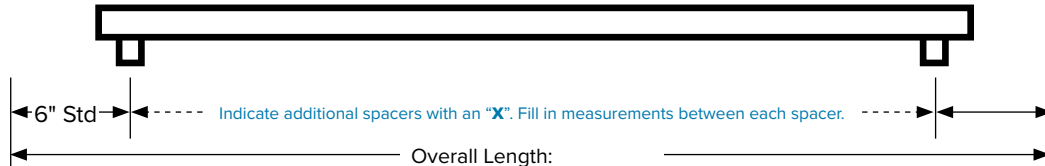
Qty:

ST Straight	 <p>←6" Std→ Indicate additional spacers with an "X". Fill in measurements between each spacer.</p> <p>Overall Length: _____</p>	Straight	ST
BR Bent		Bent	BR
BN Ballnose		Ballnose	BN

Qty:

ST Straight	 <p>←6" Std→ Indicate additional spacers with an "X". Fill in measurements between each spacer.</p> <p>Overall Length: _____</p>	Straight	ST
BR Bent		Bent	BR
BN Ballnose		Ballnose	BN

Qty:

ST Straight	 <p>←6" Std→ Indicate additional spacers with an "X". Fill in measurements between each spacer.</p> <p>Overall Length: _____</p>	Straight	ST
BR Bent		Bent	BR
BN Ballnose		Ballnose	BN

5 Additional Notes/Details/Specifications:

QUOTE FOR: _____ SHIP TO: _____ SUBMIT FORM: _____

Company: _____ Address: _____

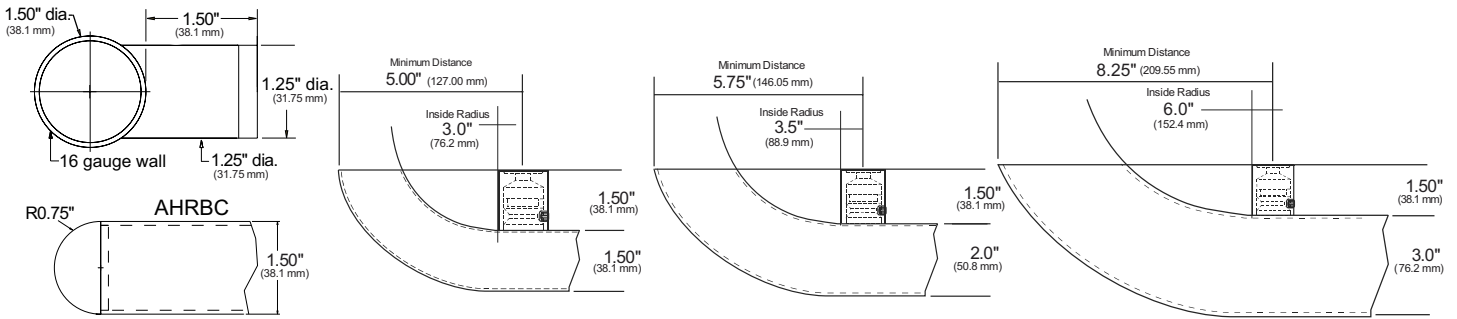
Contact: _____

E-mail: _____ Country: _____ Zip/Postal Code: _____ OR

Job Name: _____ Tel: _____ Fax: _____

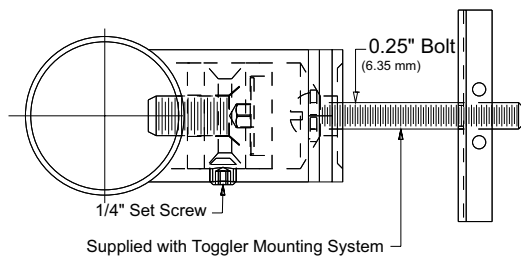
PO#: _____ Freight: Add Shipping On Account # _____

ROUND HANDRAIL ENGINEERING DATA (AHR1500-3000 SERIES)



IN CAB (REMOVABLE) MOUNTING SPACER

In Cab (Removable) Mounting Spacer

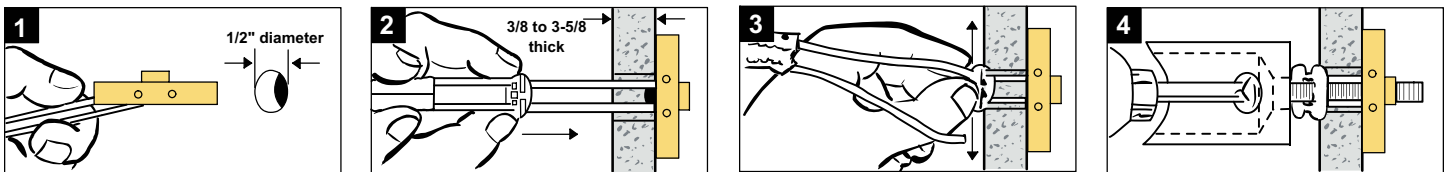


PULL-OUT VALUES for 1/4"- 20 BOLT

- 265 lbs (120 kg) ultimate tensile load in 1/2" drywall
- 306 lbs (162 kg) ultimate tensile load in 5/8" drywall
- 925 lbs (420 kg) ultimate tensile load in concrete block
- 1,283 lbs (583 kg) ultimate tensile load in steel plate

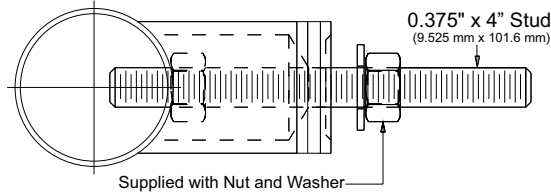
Tests by independent test laboratory show ultimate load. Industry safety standards recommend 1/4 of the values for actual applications. Age and conditions of substrate will cause load values to vary.

In Cab Removable Handrail Spacer Installation Instructions



EXTERIOR CAB MOUNTING SPACER

Exterior Cab Mounting Spacer



PULL-OUT VALUES for 3/8" STUD

- Handrail Thread-lock fastener engineered test data
- Pull-out values for removal of threaded fasteners from Lustre Products' handrails = 1509 lbs

HANDRAIL WEIGHT

ACTUAL WEIGHTS = Handrail physical weight calculations = 1.1 lbs per lineal foot (0.50 kg / 30.48 cm)

Spacer assembly = 0.4 lbs (0.18 kg) per spacer

SHIPPING WEIGHTS = Average assembled & packaged shipping weight = 2.1 lbs per lineal foot of handrail (0.95 kg / 30.48 cm)

CARE & MAINTENANCE for BRASS, BRONZE & COPPER HANDRAILS

PLEASE NOTE: These handrails & components have a spray lacquer coating. To clean and maintain this lacquer coating: gently clean with a soft cloth, dampened with non-abrasive soap and water.

Brass or Bronze is a HIGH MAINTENANCE FINISH. Yellow metals will all naturally oxidize / tarnish with time and use. As the lacquer coating applied to your handrail(s) will wear, please note the following:

- The original lacquer coating can be removed with standard xylene or lacquer thinner (available at most hardware stores – follow all related safety precautions)
- Normal maintenance (polishing / buffing / Scotch-Brite satin finishing) procedures for Brass or Bronze will result in maintaining the #4 (brushed) or #8 (polished) finish.
- Continue hand maintenance to control oxidation as well as normal wear and tear using Scotch-Brite pads, Brasso, Miracle Shine, or other commercial metal polish.

THIS LACQUER COATING IS NOT WARRANTIES.