

Typical configurations are shown in bold, or select options

To clear form, go to menu > File > Revert

1 Oval Profile:

<p>Vertical</p> <p>Only in Stainless Brushed (#4)</p> <p>1.9" x 1.0" (48.26 x 25.4mm) AHO190VS</p> 	<p>Horizontal</p> <p>Only in Stainless Brushed (#4)</p> <p>1.9" x 1.0" (48.26 x 25.4mm) AHO190VS</p> 
--	--


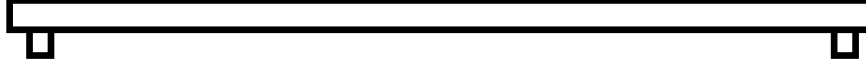
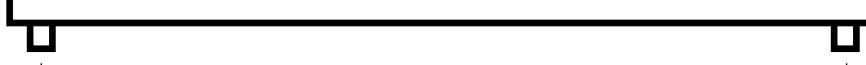

2 Vertical Profile Spacer:

<p>Barrel 1.25" (31.75mm) Dia. BL-O</p> <p>Soft Square 1.25" (31.75mm) SQ-O</p>	<p>Horizontal Profile Spacer:</p> <p>Supplied only with:</p> <p>Saddle Mount 1.25" (31.75mm) SM-O</p>
---	---

3 Spacer Installation:

<p>In-Cab (removable) IR</p> <p>Exterior Mounting IX</p> <p><small>Note: Not all options may be available; please check our website or call for details</small></p>	<p>Optional CerinoX Coating:</p> <p><small>CerinoX is a ceramic coating over Stainless brushed.</small></p> <table border="0"> <tr> <td>Onyx Black (gloss)</td> <td>CX1</td> </tr> <tr> <td>StormTrooper White (gloss)</td> <td>CX2</td> </tr> <tr> <td>Burnt Bronze (matte)</td> <td>CX3</td> </tr> <tr> <td>Charcoal Bronze (matte)</td> <td>CX4</td> </tr> <tr> <td>Bondi Golden (matte)</td> <td>CX5</td> </tr> </table>	Onyx Black (gloss)	CX1	StormTrooper White (gloss)	CX2	Burnt Bronze (matte)	CX3	Charcoal Bronze (matte)	CX4	Bondi Golden (matte)	CX5
Onyx Black (gloss)	CX1										
StormTrooper White (gloss)	CX2										
Burnt Bronze (matte)	CX3										
Charcoal Bronze (matte)	CX4										
Bondi Golden (matte)	CX5										

4 Select Rail Ends and Specify Measurements:

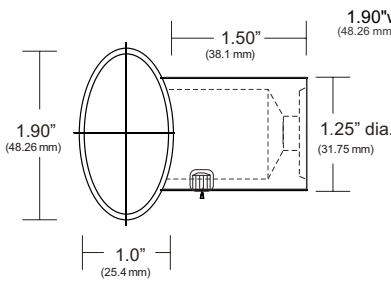
		Imperial	Metric
<p>Qty:</p> <p>ST Straight</p> <p>BR Bent</p>		<p>Straight ST</p> <p>Bent BR</p>	
<p>←6" Std→ ----- Indicate additional spacers with an "X". Fill in measurements between each spacer. ----- </p> <p>Overall Length: _____</p>			
<p>Qty:</p> <p>ST Straight</p> <p>BR Bent</p>		<p>Straight ST</p> <p>Bent BR</p>	
<p>←6" Std→ ----- Indicate additional spacers with an "X". Fill in measurements between each spacer. ----- </p> <p>Overall Length: _____</p>			
<p>Qty:</p> <p>ST Straight</p> <p>BR Bent</p>		<p>Straight ST</p> <p>Bent BR</p>	
<p>←6" Std→ ----- Indicate additional spacers with an "X". Fill in measurements between each spacer. ----- </p> <p>Overall Length: _____</p>			
<p>Qty:</p> <p>ST Straight</p> <p>BR Bent</p>		<p>Straight ST</p> <p>Bent BR</p>	
<p>←6" Std→ ----- Indicate additional spacers with an "X". Fill in measurements between each spacer. ----- </p> <p>Overall Length: _____</p>			

5 Additional Notes/Details/Specifications:

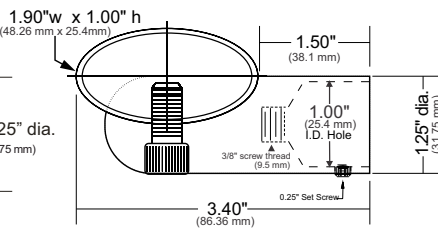
QUOTE FOR:	SHIP TO:	SUBMIT FORM:
Company: _____	Address: _____	
Contact: _____		
E-mail: _____	Country: _____ Zip/Postal Code: _____	OR
Job Name: _____	Tel: _____ Fax: _____	
PO #: _____	Freight: Add Shipping On Account # _____	

OVAL HANDRAIL ENGINEERING DATA (AHO190VS-AHO190HS SERIES)

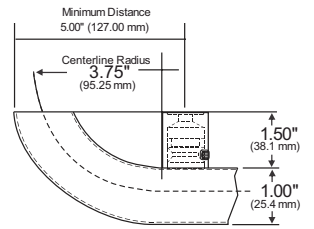
Vertical Profile #AHO190VS



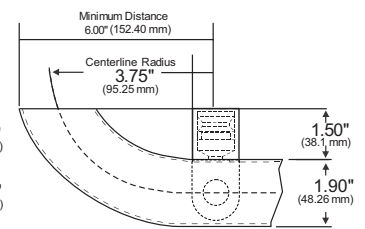
Horizontal Profile #AHO190HS



Vertical Profile Bend #AHOBEV

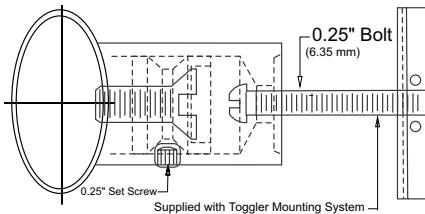


Horizontal Profile Bend #AHOBEH

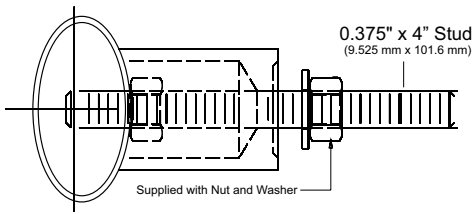


VERTICAL PROFILE INSTALLATION SPACER

In Cab (removable) Mounting Spacer



Exterior Cab Mounting Spacer



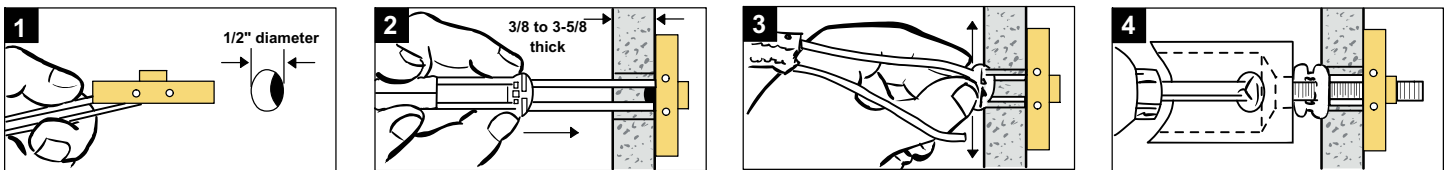
PULL-OUT VALUES for 1/4"- 20 BOLT

- 265 lbs (120 kg) ultimate tensile load in 1/2" drywall
- 306 lbs (162 kg) ultimate tensile load in 5/8" drywall
- 925 lbs (420 kg) ultimate tensile load in concrete block
- 1,283 lbs (583 kg) ultimate tensile load in steel plate

PULL-OUT VALUES for 3/8" STUD

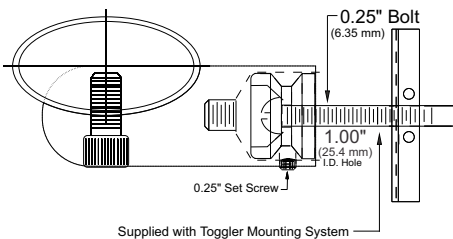
Handrail Thread-lock fastener engineered test data
 Pull-out values for removal of threaded fasteners from
 Lustre Products' handrails = 1509 lbs
 Tests by independent test laboratory show ultimate load. Industry safety standards
 recommend 1/4 of the values for actual applications. Age and conditions of sub-
 strate will cause load values to vary.

Vertical Profile Mounting Instructions

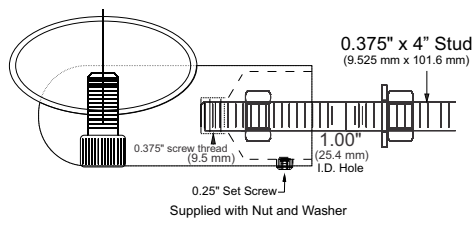


HORIZONTAL PROFILE INSTALLATION SPACER

In Cab (removable) Mounting Spacer



Exterior Cab Mounting Spacer



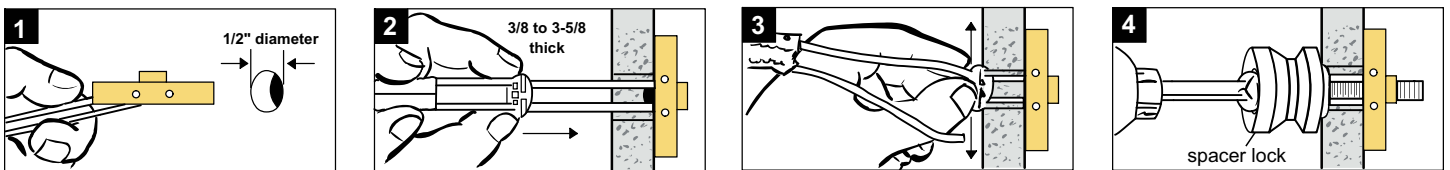
PULL-OUT VALUES for 1/4"- 20 BOLT

- 265 lbs (120 kg) ultimate tensile load in 1/2" drywall
- 306 lbs (162 kg) ultimate tensile load in 5/8" drywall
- 925 lbs (420 kg) ultimate tensile load in concrete block
- 1,283 lbs (583 kg) ultimate tensile load in steel plate

PULL-OUT VALUES for 3/8" STUD

Handrail Thread-lock fastener engineered test data
 Pull-out values for removal of threaded fasteners from
 Lustre Products' handrails = 1509 lbs
 Tests by independent test laboratory show ultimate load. Industry safety standards
 recommend 1/4 of the values for actual applications. Age and conditions of sub-
 strate will cause load values to vary.

Horizontal Profile Mounting Instructions



HANDRAIL WEIGHT

ACTUAL WEIGHTS = Handrail physical weight calculations = 1.1 lbs per lineal foot (0.50 kg / 30.48 cm)

Spacer assembly = 0.4 lbs (0.18 kg) per spacer

SHIPPING WEIGHTS = Average assembled & packaged shipping weight = 2.1 lbs per lineal foot of handrail (0.95 kg / 30.48 cm)

CARE & MAINTENANCE

To clean and maintain these handrails: gently clean only with a soft cloth, dampened with non abrasive soap and water. Maintain stainless steel using Scotch-Brite pads, Brasso, Miracle Shine, or other commercial metal polish. Brass and bronze sheet metal finishes have a baked clear coat and are non-refinishable. THE FINISH IS NOT WARRANTIED. It will degrade with normal use and typical wear and tear.