

HANDRAIL CONTINUOUS WORKSHEET

ROUND / FLATSOLID / OVAL

Typical configurations are shown in bold, or select options

To clear form, go to menu > File > Revert

1 Profile Type:

Round	1.5" (38.10mm) Diameter	AHR1500
	2.0" (50.80mm) Diameter	AHR2000
Oval	1.9" x 1.0" (48.26 x 25.40mm)	AHO190VS
	Vertical Stainless Brushed (#4)	

FlatSolid	1.5" x .375" (38.10mm x 9.53mm)	AHS1500
	2.0" x .375" (50.80mm x 9.53mm)	AHS2000
	3.0" x .375" (76.20mm x 9.53mm)	AHS3000
	4.0" x .375" (101.60mm x 9.53mm)	AHS4000
	6.0" x .375" (152.40mm x 9.53mm)	AHS6000

2 Material/Finish:

Brushed (#4)	Polished (#8)	
S4.....	S8.....	Stainless Steel (304 alloy)
B4.....	B8.....	Bronze (385 alloy)*
Y4.....	Y8.....	Yellow Brass (260 alloy)*

*Clear CerinoX is applied on all Bronze and Brass alloys.

Note: Not all design options may be available; please check our website or call for details

Optional CerinoX Coating:

CerinoX is a ceramic coating over Stainless brushed.	Onyx Black (gloss)	CX1
	StormTrooper White (gloss)	CX2
	Burnt Bronze (matte)	CX3
	Charcoal Bronze (matte)	CX4
	Bondi Golden (matte)	CX5

3 Side-wall Rail End Options:

Left	Right	Left	Right	Left	Right
Straight		Bent		Ballnose (Round Rails Only)	

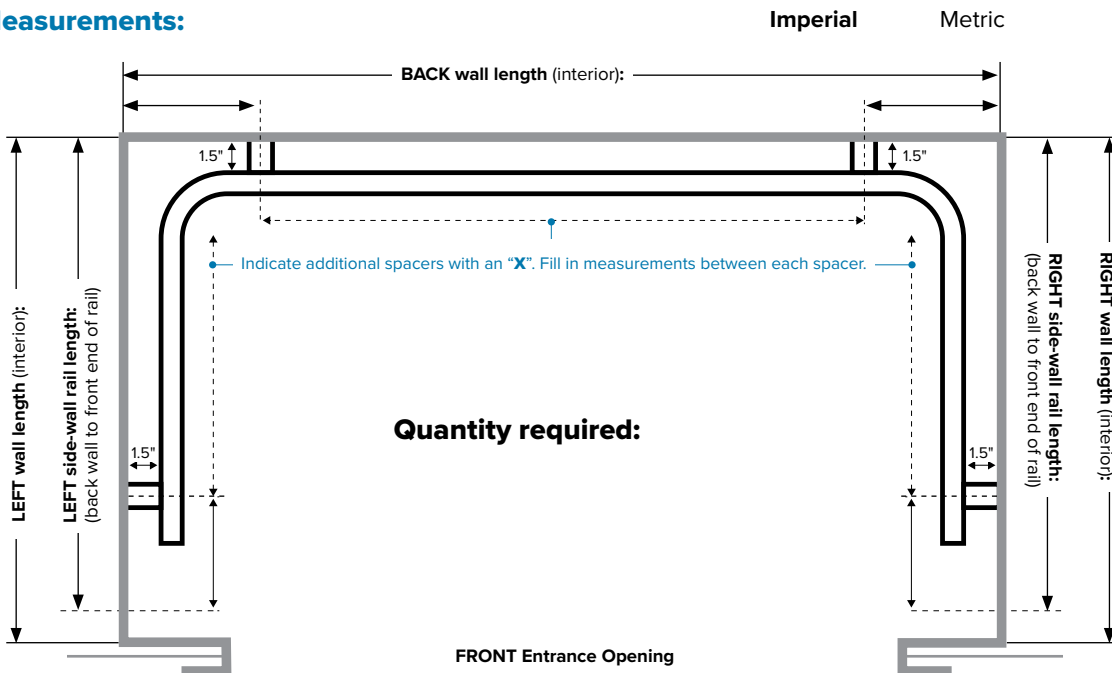
4 Spacer Mount:

Saddle Mount 1.25" (31.75mm) Dia.	SM-R
Available on Round Profile only	
Drop Mount Barrel 1.25" (31.75mm) Dia.	DM
Available on FlatSolid, Round or Oval Profile	

Spacer Installation:

In-Cab (removable)	IR
Exterior Mounting	IX

5 Specify Measurements:



6 Additional Notes/Details/Specifications:

QUOTE FOR: SHIP TO: SUBMIT FORM:

Company: _____ Address: _____

Contact: _____

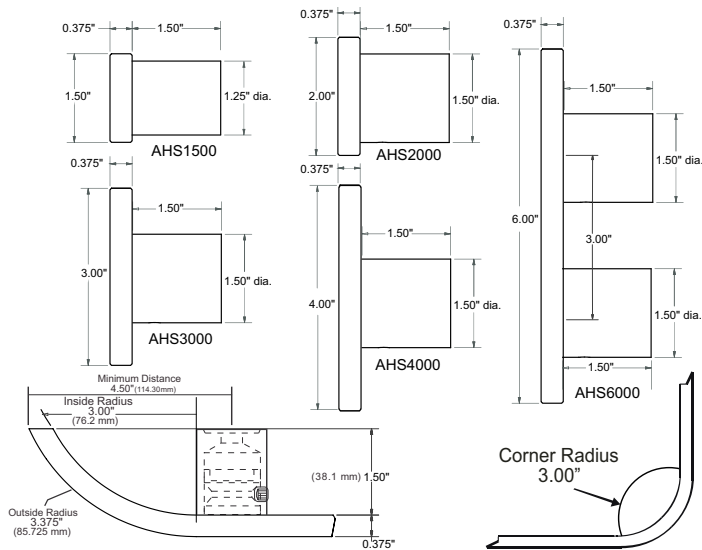
E-mail: _____ Country: _____ Zip/Postal Code: _____ OR

Job Name: _____ Tel: _____ Fax: _____

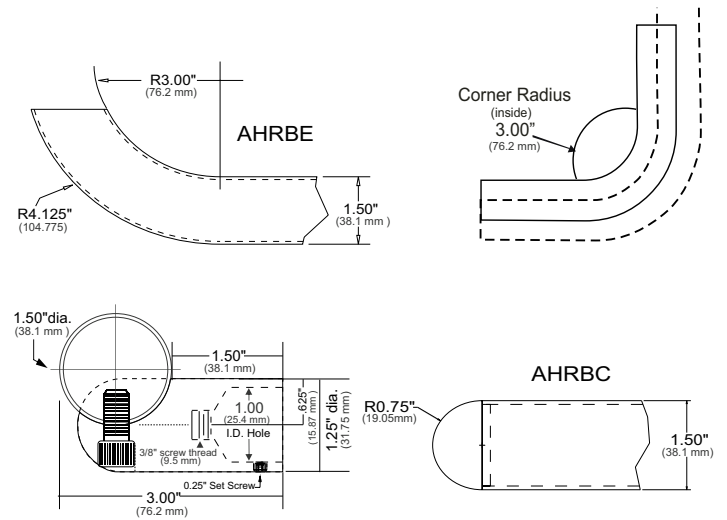
PO #: _____ Freight: Add Shipping On Account # _____

CONTINUOUS RAIL ENGINEERING DATA (FLAT SOLID BAR AHCS SERIES ROUND AHCR SERIES)

Flat Solid Handrail

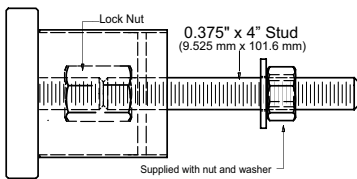


Round Handrail



EXTERIOR CAB INSTALLATION SPACER – Aluminum #4 Finish

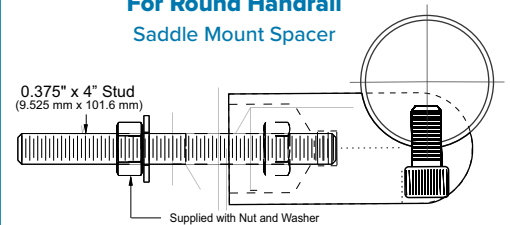
For Flat Solid Handrail



PULL-OUT VALUES for 3/8" STUD

Handrail Thread-lock fastener engineered test data Pull-out values for removal of threaded fasteners from Lustre Products' handrails = 1509 lbs

For Round Handrail Saddle Mount Spacer



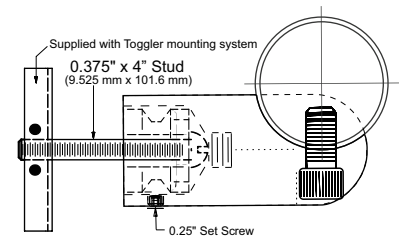
IN CAB (REMOVABLE) INSTALLATION SPACER – Aluminum #4 Finish

For Flat Solid Handrail

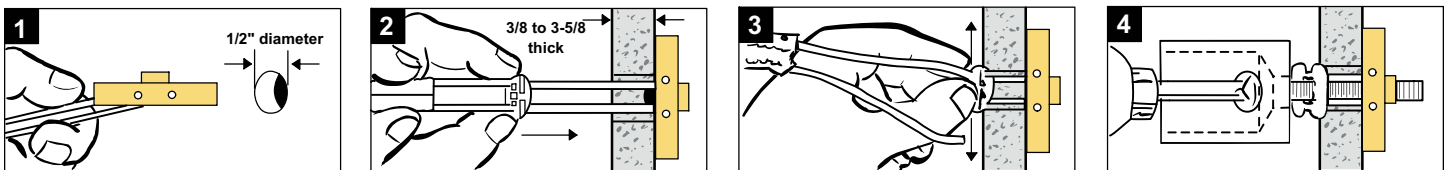
Drop Mount Installation Diagram

Drop Mount Drawings to come

For Round Handrail



In Cab Removable Handrail Spacer Installation Instructions



PULL-OUT VALUES for 1/4"- 20 BOLT

265 lbs (120 kg) ultimate tensile load in 1/2" drywall

925 lbs (420 kg) ultimate tensile load in concrete block

306 lbs (162 kg) ultimate tensile load in 5/8" drywall

1,283 lbs (583 kg) ultimate tensile load in steel plate

Tests by independent test laboratory show ultimate load. Industry safety standards recommend 1/4 of the values for actual applications. Age and conditions of substrate will cause load values to vary.

CARE & MAINTENANCE for BRASS, BRONZE & COPPER HANDRAILS

PLEASE NOTE: These handrails & components have a spray lacquer coating. To clean and maintain this lacquer coating: gently clean with a soft cloth, dampened with non-abrasive soap and water.

Brass or Bronze is a HIGH MAINTENANCE FINISH. Yellow metals will all naturally oxidize / tarnish with time and use. As the lacquer coating applied to your handrail(s) will wear, please note the following:

1. The original lacquer coating can be removed with standard xylene or lacquer thinner (available at most hardware stores – follow all related safety precautions)
2. Normal maintenance (polishing / buffing / Scotch-Brite satin finishing) procedures for Brass or Bronze will result in maintaining the #4 (brushed) or #8 (polished) finish.
3. Continue hand maintenance to control oxidation as well as normal wear and tear using Scotch-Brite pads, Brasso, Miracle Shine, or other commercial metal polish.

THIS LACQUER COATING IS NOT WARRANTIES.