

# HANDRAIL WORKSHEET **FLATSOLID**

Typical configurations are shown in bold, or select options

*To clear form, go to menu > File > Revert*

<b>1 Width:</b>	1.5" x .375" (38.10mm x 9.53mm) AHS1500	6.0" x .375" (152.40mm x 9.53mm) AHS6000
	<b>2.0" x .375" (50.80mm x 9.53mm) AHS2000</b>	8.0" x .375" (203.20mm x 9.53mm) AHS8000 S
	3.0" x .375" (76.20mm x 9.53mm) AHS3000	10.0" x .375" (254.00mm x 9.53mm) AHS10000 S
	4.0" x .375" (101.60mm x 9.53mm) AHS4000	12.0" x .375" (304.80mm x 9.53mm) AHS12000 S

Note: Not all design options are available for all widths; please check our website or call for details.

<b>2 Material/Finish:</b>	<b>Brushed (#4)</b>	<b>Linear Polished (#8)</b>	<b>3 Spacer Mount:</b>	<b>Spacer Installation:</b>		
	S4... <b>s8... Stainless Steel (304 alloy)</b>	I require the backside polished** **Optional – additional charges will apply.			<b>Barrel 1.25" (31.75mm) Diameter</b> BL-F	<b>In-Cab (removable)</b> IR
	B4... B8... Bronze (385 alloy)				Barrel 1.5" (38.10mm) Diameter BX-F	Exterior Mounting IX
	Y4... Y8... Yellow Brass (260 alloy)				Soft Square 1.25" (31.75mm) SQ-F	
C4... C4... Copper (t22 alloy)						

\*Clear CerinoX is applied on all Bronze, Brass and Copper alloys unless request otherwise.

<b>4 Optional Powder Coating:</b>	Satin White	Light Bronze Oxidized	Black Splatter
	Satin Black	Medium Bronze Oxidized	Silver Splatter
		Dark Bronze Oxidized	Midnight Splatter
			Bronze Splatter

coating over Stainless brushed.

**5 Select Rail Ends and Specify Measurements:**

	Imperial	Metric
<b>Qty:</b>		
ST Straight		Straight ST
BR Bent		Bent BR
BK Kick		Kick BK
	Overall Length:	
<b>Qty:</b>		
ST Straight		Straight ST
BR Bent		Bent BR
BK Kick		Kick BK
	Overall Length:	
<b>Qty:</b>		
ST Straight		Straight ST
BR Bent		Bent BR
BK Kick		Kick BK
	Overall Length:	

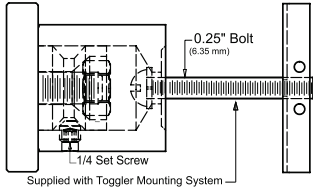
Indicate additional spacers with an "X". Fill in measurements between each spacer.

**6 Additional Notes/Details/Specifications:**

QUOTE FOR:	SHIP TO:	SUBMIT FORM:
Company: _____	Address: _____	
Contact: _____	Address 2: _____	
PO #: _____	City: _____ State/Pro: _____	OR
Job Name: _____	Zip/Postal: _____ Tel: _____	
E-Mail: _____	Freight: Add Shipping On Acct#: _____	

# FLAT SOLID BAR ENGINEERING DATA (AHS1500-12000 SERIES)

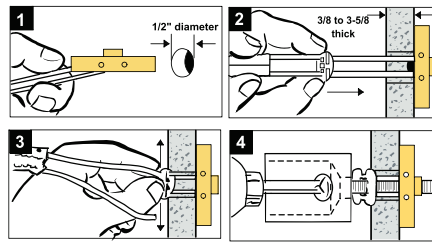
## IN CAB (REMOVABLE) MOUNTING SPACER



### PULL-OUT VALUES for 1/4" - 20 BOLT

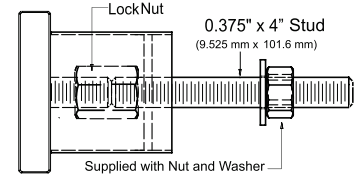
265 lbs (120 kg) tensile load in 1/2" drywall  
306 lbs (162 kg) tensile load in 5/8" drywall  
925 lbs (420 kg) tensile load in concrete block  
1283 lbs (583 kg) tensile load in steel plate

## Spacer Installation Instructions



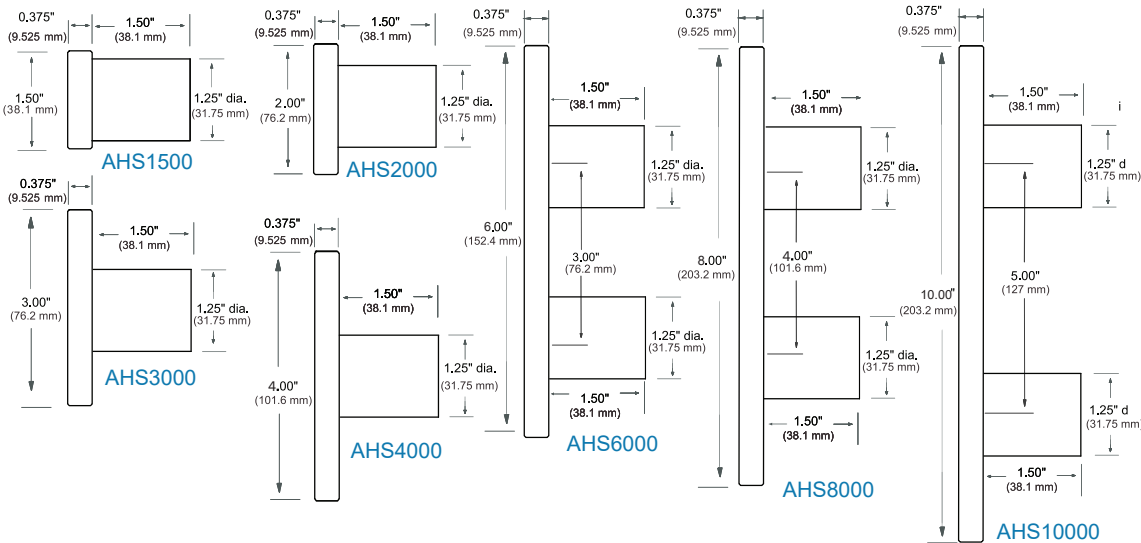
Tests by independent test laboratory shows ultimate load. Industry safety standards recommend 1/4 of the values for actual applications. Age and conditions of substrate will cause load values to vary.

## EXTERIOR CAB MOUNTING SPACER



### PULL-OUT VALUES for 3/8" STUD

Handrail Thread-lock fastener engineered test data  
Pull-out values for removal of threaded fasteners from Lustre Products' handrails = 1509 lbs

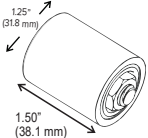


## Weights (Stainless/Brass/Bronze)

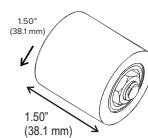
BAR WIDTH	ACTUAL WEIGHT /foot	ACTUAL WEIGHT /30.48cm	SHIPPING WEIGHTS /foot	SHIPPING WEIGHTS /30.48cm
1.5"	2.36 lbs	1.07 KG	2.45 lbs	1.11 KG
2.0"	3.05 lbs	1.38 KG	2.45 lbs	1.42 KG
3.0"	4.33 lbs	1.97 KG	4.42 lbs	2.00 KG
4.0"	5.80 lbs	2.63 KG	6.89 lbs	3.13 KG
6.0"	7.98 lbs	3.62 KG	9.07 lbs	4.12 KG
8.0"	11.60 lbs	5.26 KG	13.20 lbs	6.26 KG
10.0"	14.60 lbs	6.64 KG	16.80 lbs	7.68 KG
12.0"	17.40 lbs	7.89 KG	19.20 lbs	8.70 KG

AHS12000 center to center on spacer mounts equals 6 inches.

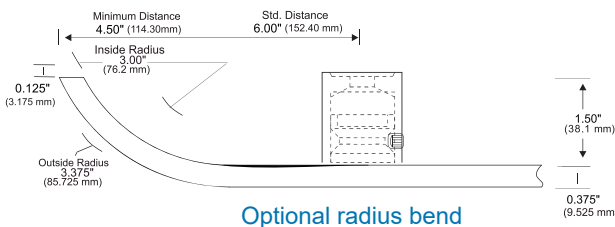
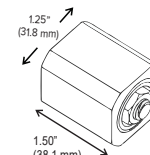
### 1.25" Dia Barrel Mount (Standard)



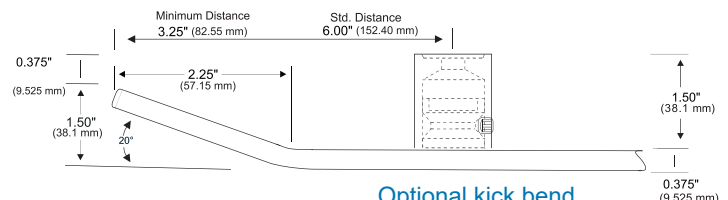
### 1.5" dia Barrel Mount



### Soft Square Mount



Optional radius bend



Optional kick bend

## CARE & MAINTENANCE for BRASS, BRONZE, COPPER & CERINOX COATED HANDRAILS

Brass or Bronze is a HIGH MAINTENANCE FINISH. Yellow metals will all naturally oxidize / tarnish with time and use.

CerinoX – is a surface applied ceramic coating is applied as a standard surface and finish protection. By request our products are available without CerinoX coating.

Bronze, Brass or Copper alloys have been coated with a protective CerinoX clear coat.

CerinoX colors are intended to provide a decorative and protective coating applied over stainless or aluminum substrate, with an additional protective CerinoX clear coat.

Although the CerinoX is resistant to most chemicals and general wear – over time, the surface coating may wear away with repeated contact, exposing the original metal alloy substrate beneath. Warranty - Due to variables of each installation and environment, CerinoX coatings are not warranted against wear and tear or use and abuse.

Maintenance – to clean and maintain this coating; gently clean with a soft microfiber cloth, dampened with non-abrasive soap and water.

Removal of CerinoX - The durable CerinoX coating may require mechanical re-finishing to remove.

Questions? Please contact supplier for additional options and services.



### California Proposition 65

WARNING: This product can expose you to chemicals including nickel and aluminum which are known to the State of California to cause cancer or birth defects or other reproductive harm. For more information, visit [www.P65Warnings.ca.gov](http://www.P65Warnings.ca.gov) or [www.LustreProducts.com](http://www.LustreProducts.com)