

HANDRAIL CONTINUOUS WORKSHEET

ROUND / FLATSOLID / OVAL

Typical configurations are shown in bold, or select options

1 Profile Type:

| | | |
|--------------|--------------------------------------|----------|
| Round | 1.5" (38.10mm) Diameter | AHR1500 |
| | 2.0" (50.80mm) Diameter | AHR2000 |
| Oval | 1.9" x 1.0" (48.26 x 25.40mm) | AHO190VS |
| | Vertical Stainless Brushed (#4) | |

FlatSolid

| | |
|----------------------------------|---------|
| 1.5" x .375" (38.10mm x 9.53mm) | AHS1500 |
| 2.0" x .375" (50.80mm x 9.53mm) | AHS2000 |
| 3.0" x .375" (76.20mm x 9.53mm) | AHS3000 |
| 4.0" x .375" (101.60mm x 9.53mm) | AHS4000 |
| 6.0" x .375" (152.40mm x 9.53mm) | AHS6000 |

2 Material/Finish:

| Brushed (#4) | Polished (#8) | |
|--------------|---------------|------------------------------------|
| S4..... | S8..... | Stainless Steel (304 alloy) |
| B4..... | B8..... | Bronze (385 alloy)* |
| Y4..... | Y8..... | Yellow Brass (260 alloy)* |

*Clear CerinoX is applied on all Bronze and Brass alloys.

Note: Not all design options may be available; please check our website or call for details

Optional CerinoX Coating:

| | | |
|--|----------------------------|-----|
| CerinoX is a ceramic coating over Stainless brushed. | Onyx Black (gloss) | CX1 |
| | StormTrooper White (gloss) | CX2 |
| | Burnt Bronze (matte) | CX3 |
| | Charcoal Bronze (matte) | CX4 |
| | Bondi Golden (matte) | CX5 |

3 Side-wall Rail End Options:

| | | | | | |
|----------|-------|------|-------|-----------------------------|-------|
| Left | Right | Left | Right | Left | Right |
| Straight | | Bent | | Ballnose (Round Rails Only) | |

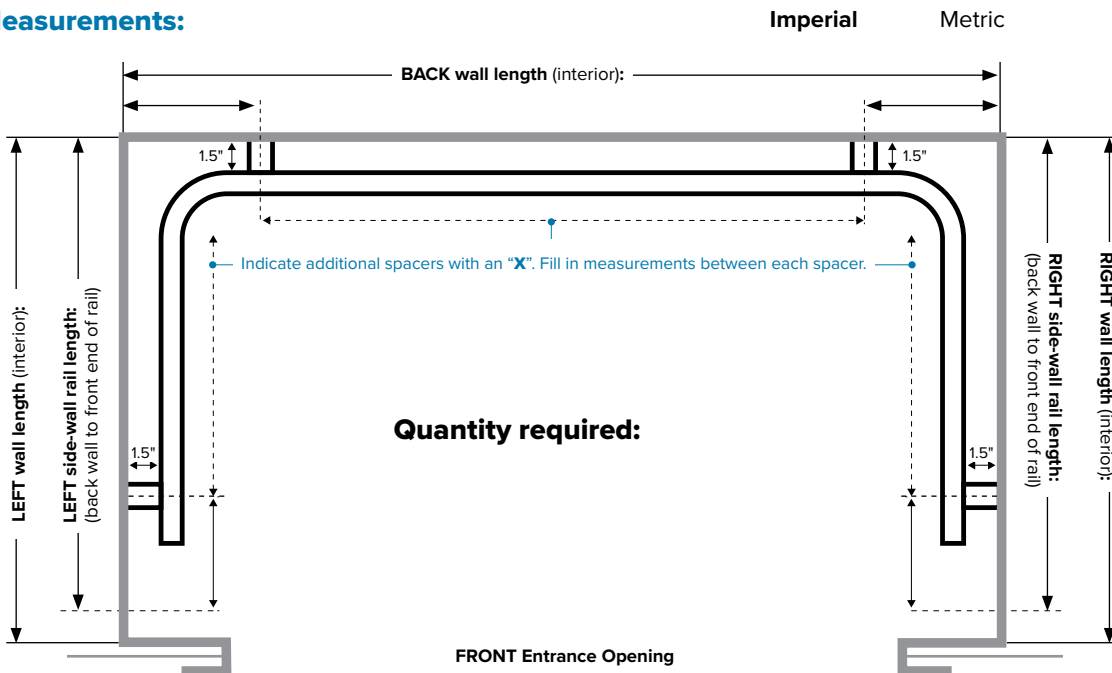
4 Spacer Mount:

| | |
|---|------|
| Saddle Mount 1.25" (31.75mm) Dia. | SM-R |
| Available on Round Profile only | |
| Drop Mount Barrel 1.25" (31.75mm) Dia. | DM |
| Available on FlatSolid, Round or Oval Profile | |

Spacer Installation:

| | |
|---------------------------|----|
| In-Cab (removable) | IR |
| Exterior Mounting | IX |

5 Specify Measurements:



6 Additional Notes/Details/Specifications:

QUOTE FOR: SHIP TO: SUBMIT FORM:

Company: _____ Address: _____

Contact: _____ City: _____

PO #: _____ Country: _____ Zip/Postal Code: _____

Job Name: _____ Tel: _____ Fax: _____

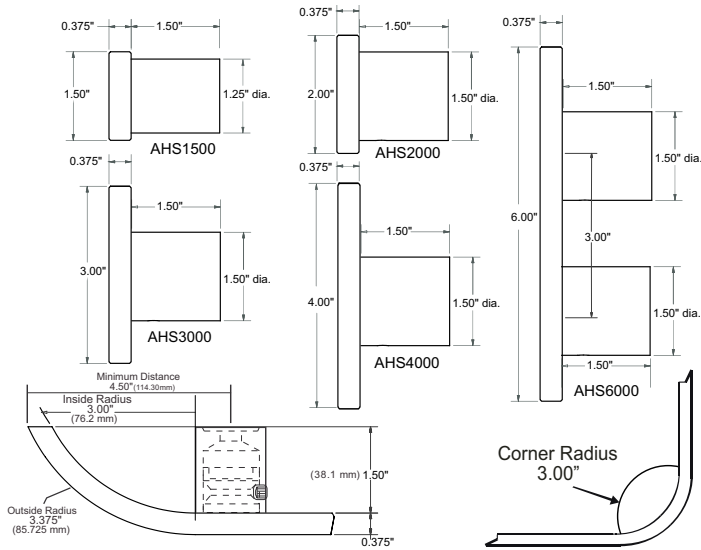
E-Mail: _____ Freight: Add Shipping On Account # _____

OR

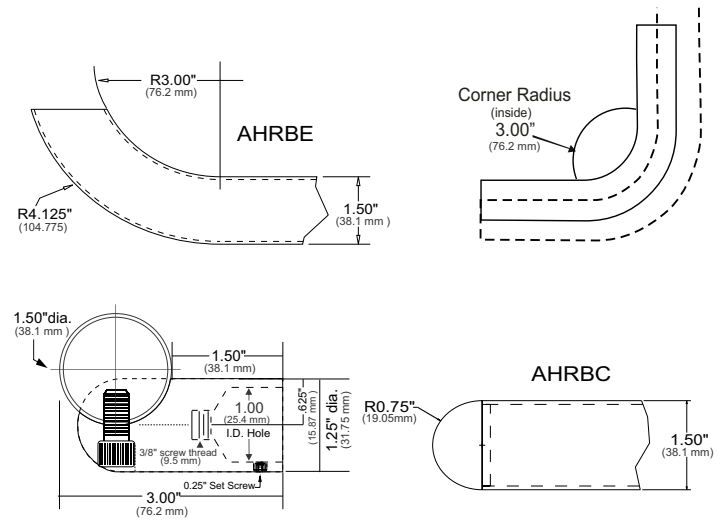
To clear form, go to menu > File > Revert

CONTINUOUS RAIL ENGINEERING DATA (FLAT SOLID BAR AHCS SERIES ROUND AHCR SERIES)

Flat Solid Handrail

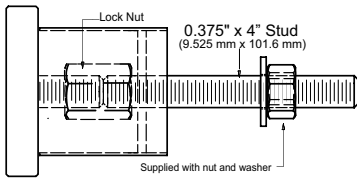


Round Handrail



EXTERIOR CAB INSTALLATION SPACER – Aluminum #4 Finish

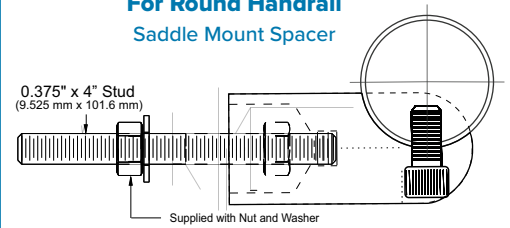
For Flat Solid Handrail



PULL-OUT VALUES for 3/8" STUD

Handrail Thread-lock fastener engineered test data Pull-out values for removal of threaded fasteners from Lustre Products' handrails = 1509 lbs

For Round Handrail Saddle Mount Spacer



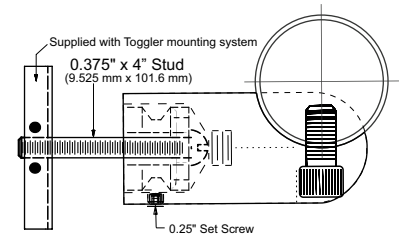
IN CAB (REMOVABLE) INSTALLATION SPACER – Aluminum #4 Finish

For Flat Solid Handrail

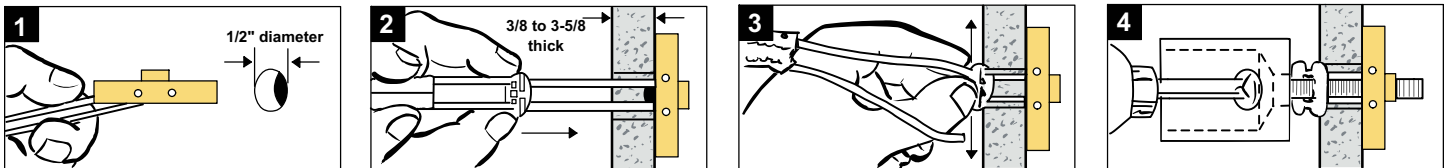
Drop Mount Installation Diagram

Drop Mount Drawings to come

For Round Handrail



In Cab Removable Handrail Spacer Installation Instructions



PULL-OUT VALUES for 1/4"- 20 BOLT

265 lbs (120 kg) ultimate tensile load in 1/2" drywall

925 lbs (420 kg) ultimate tensile load in concrete block

306 lbs (162 kg) ultimate tensile load in 5/8" drywall

1,283 lbs (583 kg) ultimate tensile load in steel plate

Tests by independent test laboratory show ultimate load. Industry safety standards recommend 1/4 of the values for actual applications. Age and conditions of substrate will cause load values to vary.

CARE & MAINTENANCE for BRASS, BRONZE & COPPER HANDRAILS

PLEASE NOTE: These handrails & components have a spray lacquer coating. To clean and maintain this lacquer coating: gently clean with a soft cloth, dampened with non-abrasive soap and water.

Brass or Bronze is a HIGH MAINTENANCE FINISH. Yellow metals will all naturally oxidize / tarnish with time and use. As the lacquer coating applied to your handrail(s) will wear, please note the following:

1. The original lacquer coating can be removed with standard xylene or lacquer thinner (available at most hardware stores – follow all related safety precautions)
2. Normal maintenance (polishing / buffing / Scotch-Brite satin finishing) procedures for Brass or Bronze will result in maintaining the #4 (brushed) or #8 (polished) finish.
3. Continue hand maintenance to control oxidation as well as normal wear and tear using Scotch-Brite pads, Brasso, Miracle Shine, or other commercial metal polish.

THIS LACQUER COATING IS NOT WARRANTIES.