

handrail sizes & part no.

Choose a Style & Size	
flat	round
<input type="checkbox"/> 1.5" x .375" AHCS1500 (L)	<input type="checkbox"/> 1.5" Diameter AHCR1500 (L)
<input type="checkbox"/> 2.0" x .375" AHCS2000 (L)	<input type="checkbox"/> 2.0" Diameter AHCR2000 (L)
<input type="checkbox"/> 3.0" x .375" AHCS3000 (L)	<input type="checkbox"/> 3.0" Diameter AHCR3000 S
<input type="checkbox"/> 4.0" x .375" AHCS4000 (L)	
<input type="checkbox"/> 6.0" x .375" AHCS6000 S	

Select a Finish	Brushed	Polished*
Stainless Steel(S)	<input type="checkbox"/>	<input type="checkbox"/> (SP)
Bronze (#385 alloy).....(B)	<input type="checkbox"/>	<input type="checkbox"/> (BP)
Yellow Brass (#260 alloy) (YB)	<input type="checkbox"/>	<input type="checkbox"/> (YBP)
Copper(C)	<input type="checkbox"/>	<input type="checkbox"/> (CP)

*Additional charges apply.

E-Form Instructions

To fill out form, click and type in highlighted form fields. Use Email button to send it.

If preferred you can print this form, fill out by hand and fax it to us.

Accurate & Proper measurements are YOUR Responsibility-TAKE CARE

Select a Sidewall Return

Round Flat

.....Straight.....

.....Bent.....

.....Bullet.....

Round Handrails Only

Select a Spacer Type

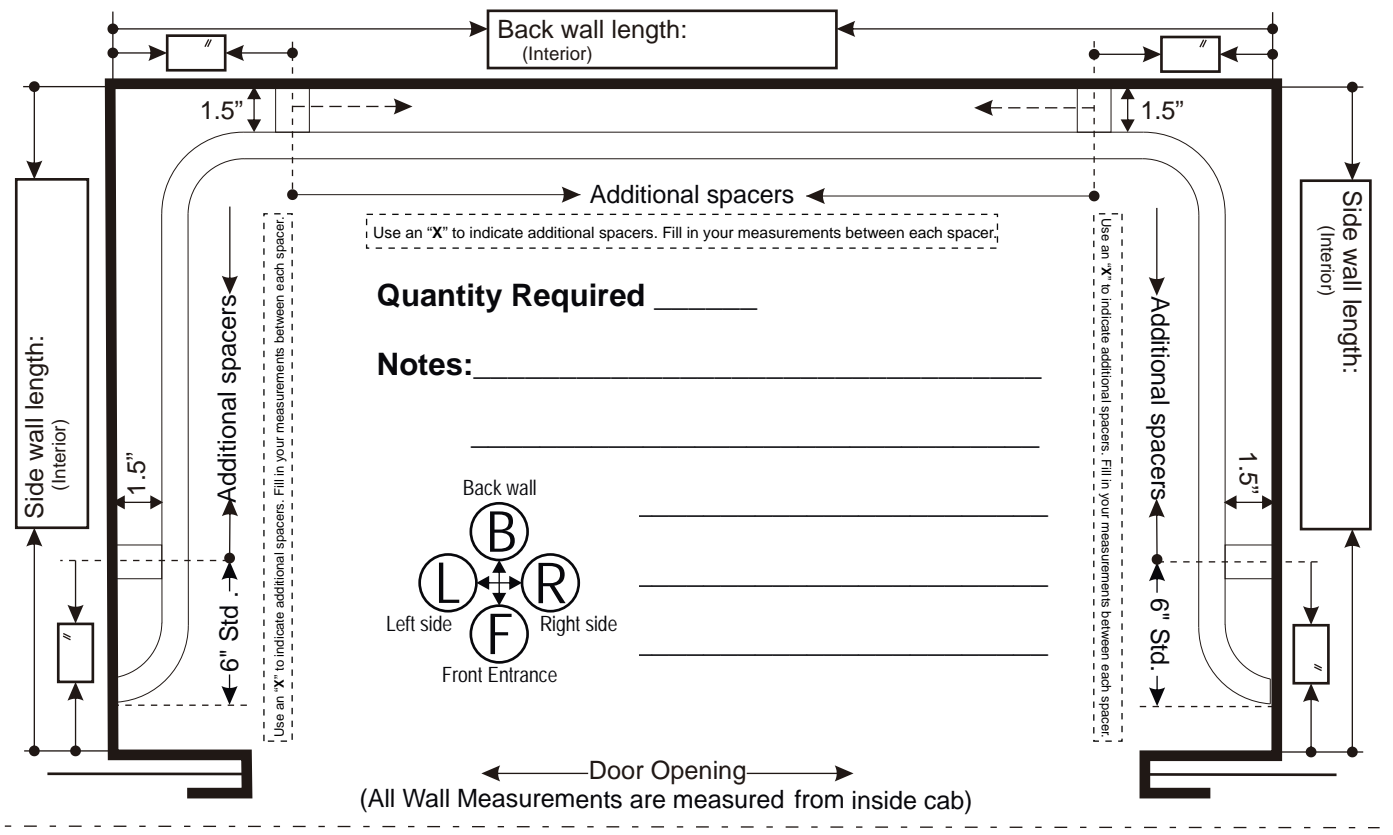
Exterior Cab Mounting-Preferred standard spacer method of installation. Requires cab exterior access. Supplied bolt passes from cab exterior, through wall, then through spacer and threads into handrail. Bolt can be tightened securely, pulling cab shell and handrail tight together.

In Cab Mounting (Removable)

FLAT BAR HANDRAILS: Split Spacer Assembly (In Cab Removable)
 Our most innovative design. The best option for in-cab installations. With spacers mounted to the wall, the handrail is raised, so the welded pins rest into the top saddles. The bottom half of the split spacers bolt into place, securing the handrail to the cab walls.

ROUND HANDRAILS: Saddle Mount Spacer (In Cab Removable)
 Our most innovative design. The best option for in-cab installations. The spacer mount is secured to the cab wall with our Toggler system. The handrail is lowered onto the spacer, and a bolt from the underside of the spacer fastens the handrail into the saddle.

Handrail Worksheet



Company: _____

Job Name: _____

Order #: _____ P.O.#: _____

Notes: _____

Contact Name: _____



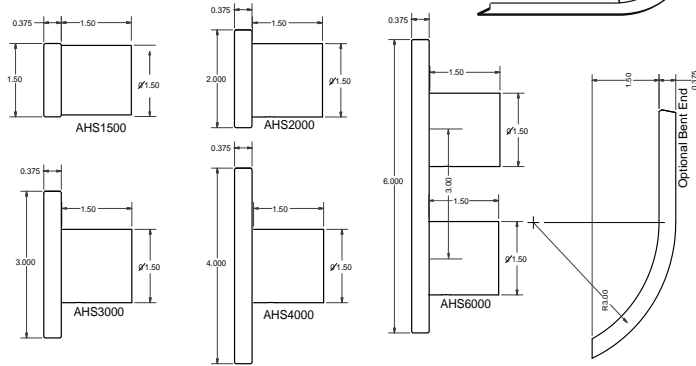
SHIP TO ADDRESS: _____

Phone (____) ____ - _____

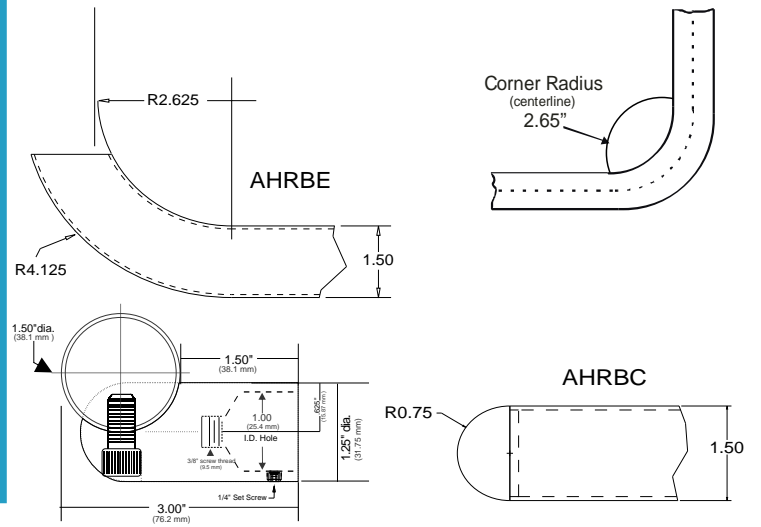
Fax (____) ____ - _____

AHCS series solid flat bar/AHCR series round continuous rail engineering data

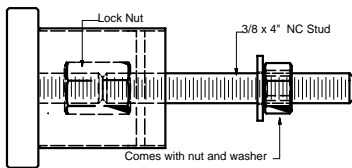
Solid Flat Bar



Round Rail



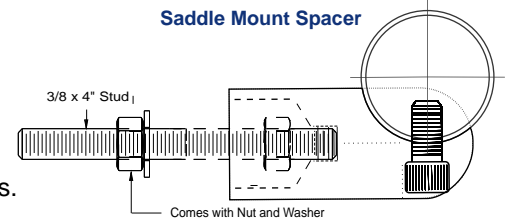
exterior cab mounting spacer



Exterior Mounted Flat Handrail

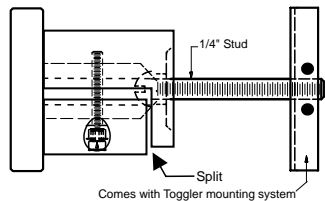
Pull-Out Values For 3/8\" Stud

Handrail Threaded fastener engineered test data Pull-out values for removal of threaded fasteners from Lustre Products' handrails = 1509 lbs.

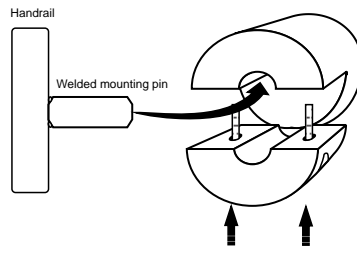


Exterior Mounted Round Handrail

in cab (removable) mounting spacer

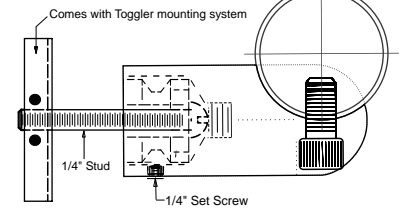


Interior Mounted Flat Handrail



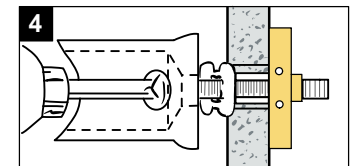
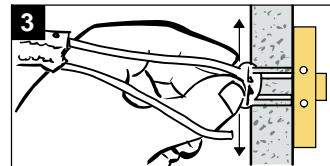
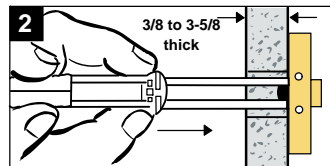
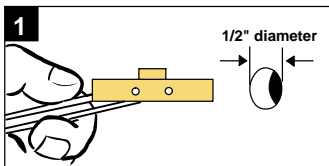
Split Spacer Installation Diagram

In Cab (Removable) Mounting Spacer



Interior Mounted Round Handrail

In Cab Removable Handrail Spacer Installation Instructions



Pull-Out Values For 1/4\" - 20 Bolt

265 lbs (120 kg) ultimate tensile load in 1/2\" drywall
306 lbs (162 kg) ultimate tensile load in 5/8\" drywall

925 lbs (420 kg) ultimate tensile load in concrete block
1,283 lbs (583 kg) ultimate tensile load in steel plate

Tests by independent test laboratory show ultimate load. Industry safety standards recommend 1/4 of the values for actual applications. Age and conditions of substrate will cause load values to vary.

Shipping

All Continuous rails are crossbraced and packaged for commercial transport.