

Architectural - cladding

- ___ **Diamond-Tex** (7-GM S/S textured finish)
- ___ **Linen** (S/S embossed finish)
- ___ **Checks** (S/S embossed finish)
- ___ **Ripple** (5-SM S/S textured finish)
- ___ **Leathergrain** (S/S textured finish)
- ___ **Cambridge** (S/S textured finish)
- ___ **Pinstripe (Gold)** (S/Scolortex finish)
- ___ **Pinstripe (Blue)** (S/Scolortex finish)
- ___ **Pinstripe (Black)** (S/Scolortex finish)
- ___ **Goosebump** (6-OM S/S textured finish)
- ___ **Pearl (Gold)** (S/S colortex finish)
- ___ **Pearl (Blue)** (S/S colortex finish)
- ___ **Pearl (Black)** (S/S colortex finish)

Part no.

- AHE3000DX
- AHE3000LX
- AHE3000XX
- AHE3000RX
- AHE3000HX
- AHE3000CX
- AHE3000CG
- AHE3000CB
- AHE3000CK
- AHE3000GX
- AHE3000GG
- AHE3000GB
- AHE3000GK

Std. Handrail Finish - cladding

- ___ **Stainless Steel** (#4 Brushed) AHE3000S
- ___ **Stainless Steel** (#8 Polished) AHE3000SP
- ___ **Yellow Brass** plated steel (#4 Brushed) AHE3000YB
- ___ **Yellow Brass** plated steel (#8 Polished) AHE3000YBP
- ___ **Bronze** plated steel (#4 Brushed Red Brass) AHE3000B

Part no.

Handrail Spacer Type

(Please note all spacer locations are adjustable)

- ___ Exterior Cab Mounting Spacer
- ___ In Cab (Removable) Mounting Spacer

Handrail Worksheet



Please Photocopy and Fill in Specifications

Qty. _____

Total # of Spacers _____
required per rail

Overall Length: _____

Qty. _____

Total # of Spacers _____
required per rail

Overall Length: _____

Qty. _____

Total # of Spacers _____
required per rail

Overall Length: _____

Qty. _____

Total # of Spacers _____
required per rail

Overall Length: _____

Qty. _____

Total # of Spacers _____
required per rail

Overall Length: _____

Company: _____

SHIP TO ADDRESS: _____

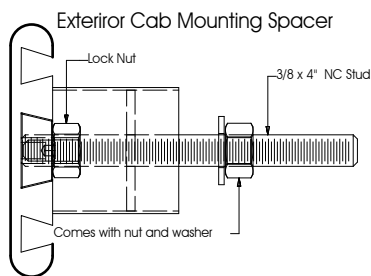
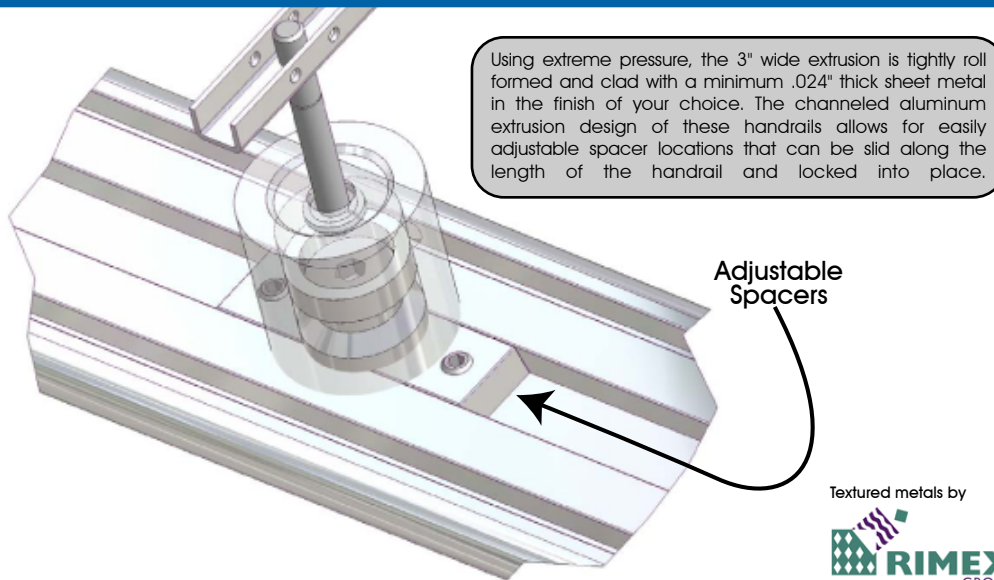
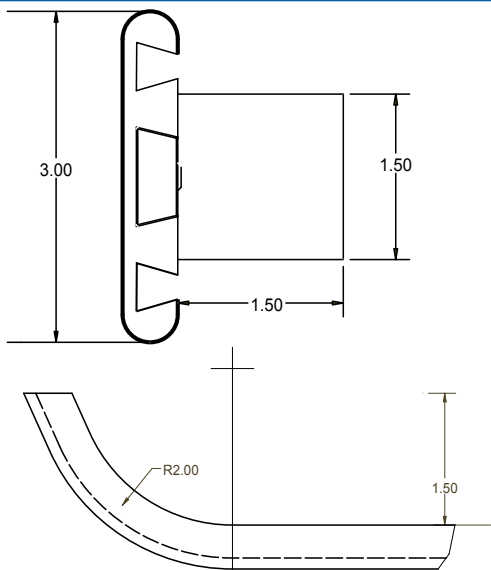
Job Name: _____

Order #: _____ P.O.#: _____

Notes: _____

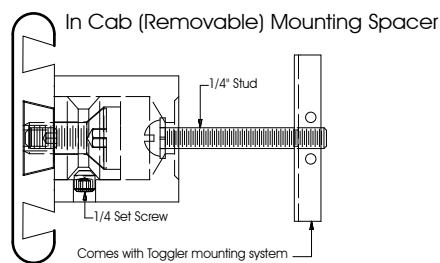
Contact Name: _____ **Phone #** (____) _____ - _____ **Fax #** (____) _____ - _____

AHE 3000 Series - ENGINEERING DATA



PULL-OUT VALUES for 3/8" STUD

Handrail Thread-lock fastener engineered test data
 Pull-out values for removal of threaded fasteners from Lustre Products' handrails = 1509 lbs

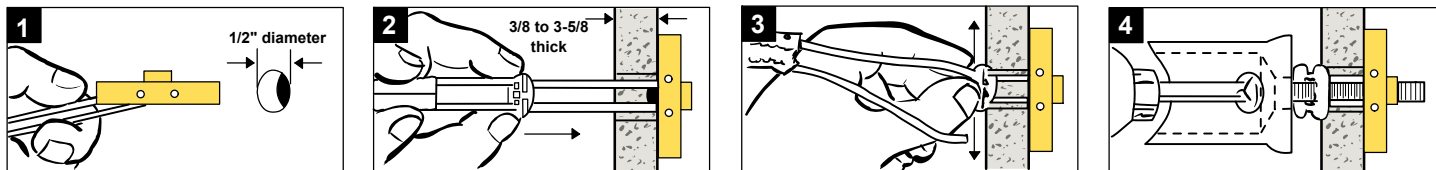


PULL-OUT VALUES for 1/4"-20 BOLT

265 lbs (120 kg) ultimate tensile load in 1/2" drywall
 306 lbs (162 kg) ultimate tensile load in 5/8" drywall
 925 lbs (420 kg) ultimate tensile load in concrete block
 1,283 lbs (583 kg) ultimate tensile load in steel plate

Tests by independent test laboratory show ultimate load. Industry safety standards recommend 1/4 of the values for actual applications. Age and conditions of substrate will cause load values to vary.

REMOVABLE HANDRAIL SPACER INSTALLATION INSTRUCTIONS



SHIPPING WEIGHTS = Handrail physical weight calculations = 1.62 lbs per lineal foot (0.73 kg / 30.48 cm)
 Spacer assembly = 0.58 lbs (0.26 kg) per spacer

ACTUAL WEIGHTS = Average assembled and packaged shipping weight = 2.48 lbs per lineal foot of handrail (1.13 kg / 30.48 cm)